

Evaluating InfoConnect Desktop



Micro Focus[®]
InfoConnect[®]

If you need terminal emulation, and you like InfoConnect classic editions...

...you're going to love InfoConnect Desktop Pro!

Upgrading from InfoConnect classic editions to InfoConnect Desktop editions couldn't be easier. When you start InfoConnect Desktop the first time, all your existing macros, keyboard maps, and session files work as expected. InfoConnect Desktop has the features you depend on for advanced productivity, secure multi-host connectivity, centralized management and more.

Instead of an application designed for the operating systems you were using a decade ago, InfoConnect Desktop gives you an emulator that has earned the Windows logos pertinent to the enterprise and is uniquely integrated with the desktop and Microsoft Office applications.

Windows integration provides a range of built-in security capabilities, designed to help you meet evolving internal and external security requirements. Integration with Windows' User Account Control (UAC) maximizes your control over user access to administrative features and functions, and minimizes desktop vulnerabilities. And InfoConnect Desktop's Trusted Locations feature can prevent security breaches by allowing users to open documents only from trusted file locations that you specify.

InfoConnect Desktop protects the security of your data before, during, and after transmission by providing time-tested cryptographic modules that meet the rigorous federal government FIPS 140-2 standards. Besides providing secure access to hosts and gateways, additional tools help you verify the authenticity of hosts, gateways, and clients, and facilitate compliance with regulations such as Payment Card Industry (PCI) audits, Sarbanes-Oxley (SOX), HIPAA/HITECH, FISMA, Basel II, and evolving regulatory mandates regarding data protection.

Other terminal emulators may provide security through third-party partnerships, and even then, they typically support a lower level of certification. With InfoConnect, you get a single-vendor solution that's

integrated with the emulator and supported by dedicated security development, test, and technical support teams at Micro Focus.

InfoConnect Desktop seamlessly integrates with Microsoft Office applications to provide a consistent user experience. And the productivity features that you used in InfoConnect classic editions are more powerful than ever. You will be amazed at how much these tools save time.

- Open an e-mail message or Word document, and automatically include the current host screen content in the message or document.
- Send a single screen or a series of screens to a PowerPoint presentation to create training decks or manuals for host applications.
- Configure information privacy filters to prevent online display of sensitive data, such as credit card numbers, social security numbers, and account and personal identification numbers.
- Use the auto-complete and auto-expand functions to save time and keystrokes, and the built-in spell-check function to reduce errors.

Instead of just emulating a dumb terminal, InfoConnect Desktop makes your emulation sessions powerful, productive, secure, and easy to use.

Open any number of sessions in the InfoConnect Desktop Pro workspace, and connect to any combination of Unisys 2200 and A-Series, IBM mainframe, ALC, T27, AS/400 (IBM System i), UNIX/Linux, HPe3000, or OpenVMS hosts. Each session appears within its own tabbed window, making it fast and easy to move between sessions. Session documents include pointers to mouse maps, keyboard maps, theme files, hotspot files, and Ribbons that you can customize for greater efficiency. And all customizations can be stored in a single, compound session document for easy management and deployment.

Four pre-defined user interface modes make it easy for users to configure a workspace appropriate to their work style. These include the default Ribbon, the Classic MDI (similar to the multiple document interface used in InfoConnect Accessory Manager in InfoConnect classic editions), the Browser style, and TouchUx (designed for use on mobile devices with Citrix XenApp/Receiver). See "User Experience Options" below to learn more. Each interface can also be customized to further meet individual needs, and administrators can deploy customizations to users.

EVALUATING INFOCONNECT DESKTOP

You can even open Web applications in the workspace. You can, for example, copy an address out of your customer database, paste it into your favorite online mapping application, and get directions to the customer location. Or, create a custom application using the InfoConnect Desktop .NET API to automate this process. Once your sessions have been configured to your liking, you can save them as a layout file, which opens them together with a single click.

You can quickly take advantage of the advanced capabilities of InfoConnect Desktop because it supports your existing IT infrastructure, including Windows 7, 8, and 10, Windows Remote Desktop Services, and Citrix XenApp platform, as well as other virtualization platforms.

If you don't yet have InfoConnect Desktop software, go to <http://www.attachmate.com/Evals/Evaluate.htm> and fill out an evaluation request form. You'll be sent an e-mail message with instructions on how to download and install InfoConnect. Once you've installed the software, you'll want to take a brief tour of the new user interface.

Start InfoConnect Desktop

To open InfoConnect Desktop from the Start menu, select Micro Focus InfoConnect, then select InfoConnect Workspace.



When the workspace is open, you'll see the Create New Document dialog box. Close this for now, so that you can get acquainted with the InfoConnect Desktop user interface.

Use the Quick Access toolbar

The Quick Access toolbar provides one-click access to common tasks.




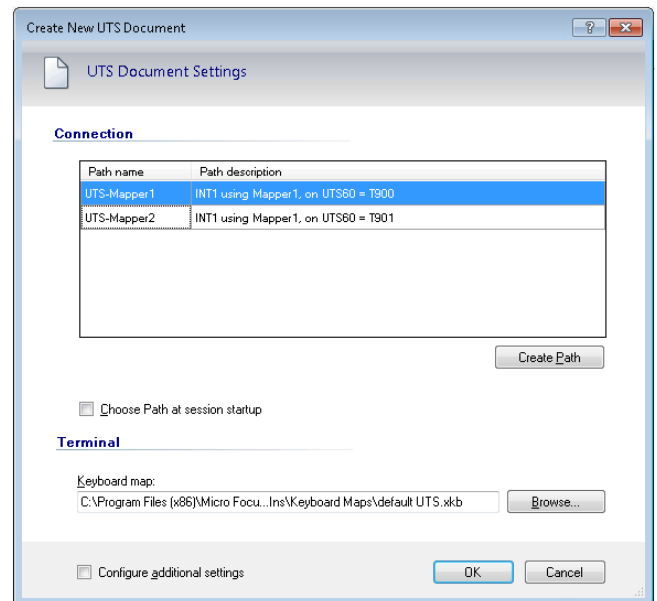
The Quick Access toolbar is at the top of the workspace

Move your mouse pointer over each button to reveal a tooltip describing what it does. To add commands to this toolbar to provide quick access to your most frequently performed tasks. Simply, click  or  and select an action in the Action list.


Connect to a Session

To create a terminal session, complete the following steps:

1. From the Quick Access toolbar, click the New Document button .
2. Select the type of session you want to set up, and click Create.



The Create New UTS Document dialog box

3. When you create a new ALC, UTS, or T27 session, you'll see a list of paths that apply to the selected session type. If you've upgraded from an earlier version of InfoConnect, your existing paths are automatically included in this list.
 - To connect using an existing path, select the path and click OK.
 - To create a new path, click Create Path to launch the Path Wizard.
4. To save the session document, from the Quick Access Toolbar, click the Save button .

In addition to using the Path Wizard as described above, you can use familiar administrative tools for managing paths. INFOConnect Manager 32 has been renamed and has an updated user interface. Find both the new InfoConnect Manager and the Database Editor under Micro Focus InfoConnect > Utilities in the Windows Start Menu.

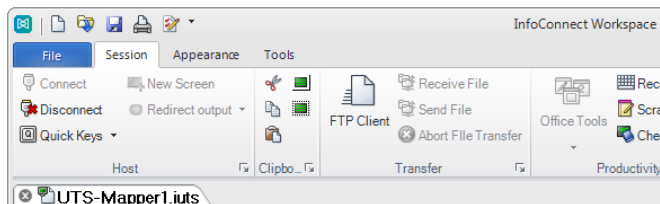
User Experience Options

With InfoConnect Desktop, you can choose from various user interface modes: *Ribbon*, *Classic MDI*, *Browser*, or *TouchUx*.

The Ribbon

Ribbon mode shares the look-and-feel of modern Microsoft Windows and Office products. You access InfoConnect's features and settings through the Ribbon's expansive graphical interface.

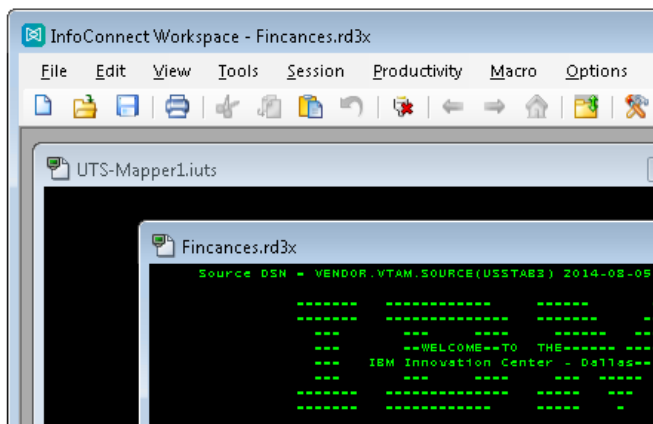
By default, InfoConnect opens using the Ribbon.



The Ribbon user-interface mode

Classic MDI

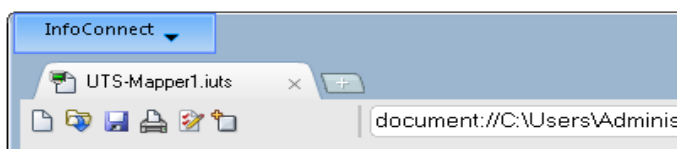
The Classic mode is similar to the familiar interface and menus you expect from InfoConnect classic editions. With this option, each session document opens in a separate window within the workspace.



The Ribbon user-interface mode

The Browser

Browser mode takes a minimalist approach, like many of the latest Web browser interfaces. In the Browser mode, you access features and settings from the InfoConnect menu.



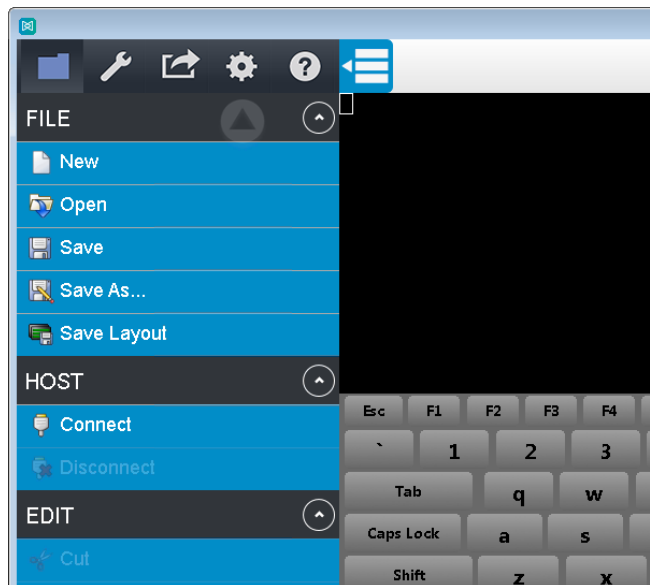
The Browser user-interface mode

TouchUx


TouchUx mode is consistent with native touch applications for iOS, Android, and Windows and enhances the emulation experience from a mobile device.

You can interact with any enterprise host application with the same level of functionality, usability, and access that you have on a desktop. Complete keyboard functionality is provided and data entry is optimized for smaller screen sizes.

You can use InfoConnect natively on Windows tablet devices. You can also use it on Android and iPad devices by running in a Citrix XenApp environment.



To switch interfaces, do the following:

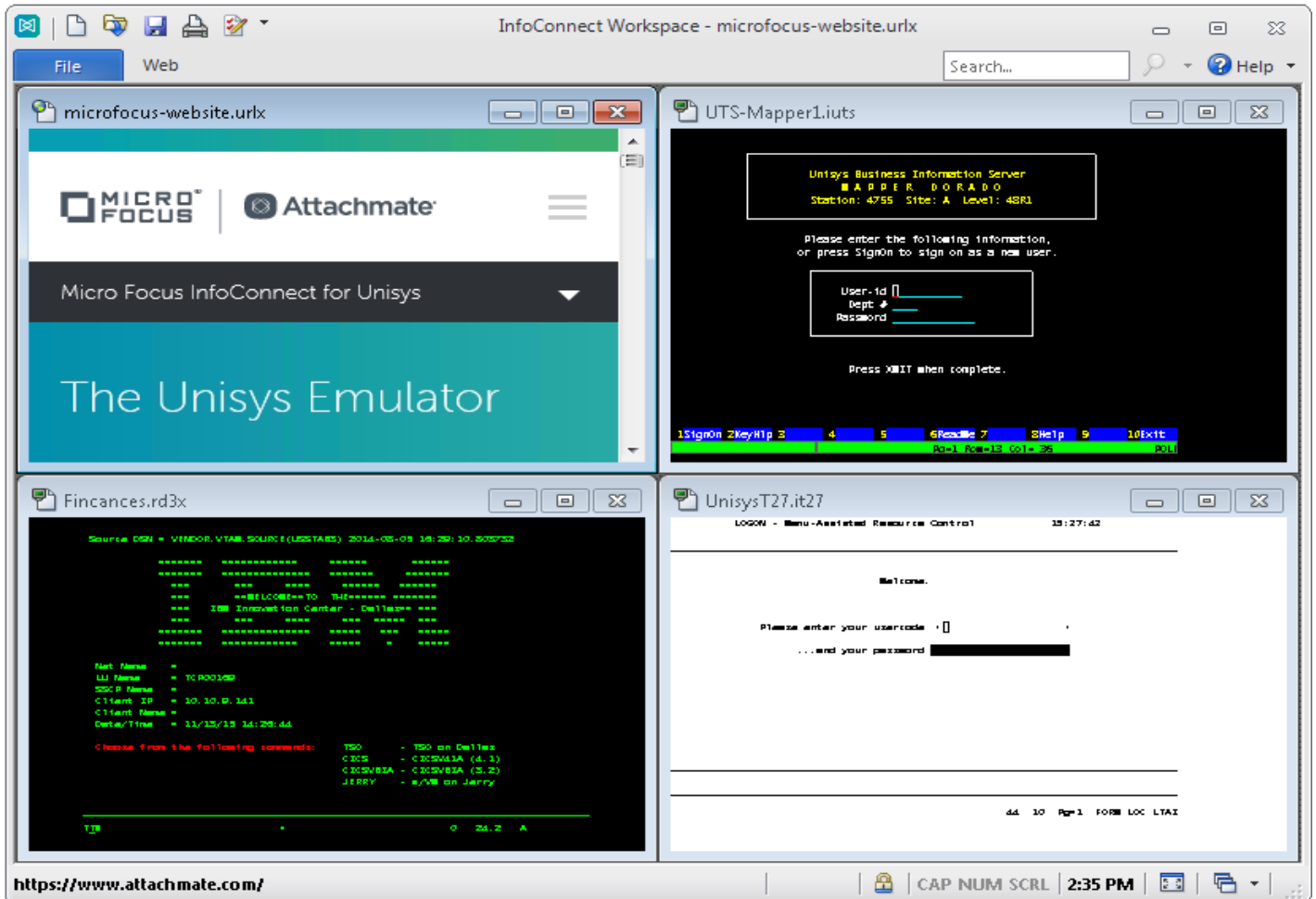
1. From the InfoConnect File menu, choose  InfoConnect Workspace Settings.
2. Under Workspace Settings, click Configure User Interface. In the User interface mode list, choose a different mode, and click OK.
3. Close the InfoConnect Workspace, and then reopen it to see the change.

If you try out Classic MDI or TouchUx mode, you'll want to switch back to Ribbon mode to match the instructions provided as you continue the evaluation.

EVALUATING INFOCONNECT DESKTOP

Many users prefer the full screen view in InfoConnect. In the bottom right-hand corner of the workspace is a screen icon that you can click to switch between Full Screen and Normal views. When you switch to Full Screen view in the Ribbon mode, the Ribbon is minimized. To restore the Ribbon, double-click a Ribbon tab.

You can open multiple terminal sessions and Web pages. Each will open in their own tab in the workspace. If you prefer to view your session documents side-by-side instead of in tabs, you can choose the tiled display



Sessions displayed using full screen view and tiled windows

Layouts

If you regularly work with several sessions open at the same time, you can save them all, together with any Web pages, as a layout.

To create a Layout:

- On the InfoConnect File menu, choose Save Layout.

When you open a layout, InfoConnect opens all the documents you had open when you saved the layout, connects configured sessions, and restores your


workspace to the same size and location as when you saved it.

You can open as many terminal sessions and Web pages as your computer's resources will support. Each will open in their own tab in the workspace. If you prefer to view your sessions side-by-side, you can display your session documents in windows instead of tabs.

Integrated Web Sessions

InfoConnect Desktop includes an integrated Web browser, which allows you to open a Web page in the workspace.

To add a Web page to your workspace:

1. From the Quick Access toolbar, click the New Document button .
2. From the Create New Document dialog box, select Web, and then click Create.
3. In the URL box, enter the URL of a mapping application, such as Google maps, and click OK.

The Web mapping application opens in its own tab in the workspace. You'll use this connection later in the evaluation.

Provide Windows Integration

InfoConnect Desktop has earned the *Compatible with Windows 7* logo, the *Windows 8 Compatible* logo, and the *Windows 10 Compatible* logo. It has been optimized to take advantage of the security and productivity enhancements provided in Windows 10.

One example is the integration between the InfoConnect Permissions Manager and Windows User Account Control. You can specify, at a granular level, which tasks users can perform within InfoConnect.

InfoConnect Desktop has implemented the Ribbon UI for providing a powerful, efficient, and fully customizable user experience that can be tailored to meet the demands of your business workflow. See the Visual Basic for Applications section of this guide for an example of how to customize the ribbon to run a VBA macro.

Strengthen Host Security

Dealing with sensitive customer data requires security support on multiple levels.

The U.S. federal government is a large Micro Focus customer and demands the highest level of security from their products — for example, FIPS 140-2 for strong data encryption; Department of Defense PKI for strong certificate-based, 2-factor authentication; and FDCC/USGCB to prove that InfoConnect Desktop can support a locked-down desktop configuration.

The high level of InfoConnect security can help you comply with governance, risk, and compliance (GRC) mandates driven by PCI audits, Sarbanes-Oxley (SOX), HIPAA/HITECH, and Basel II.

Protect Mission-Critical Host Data

InfoConnect Desktop includes information privacy features designed to protect customer data and secure the desktop.

Set Up Privacy Filters

Privacy filters allow you to mask sensitive host data, such as personal identification numbers, and prevent that data from being printed, saved, or copied.

Let's say that you want to protect your customers' telephone numbers. With InfoConnect, it's easy:

1. On the Ribbon File menu, choose InfoConnect Workspace settings
2. In InfoConnect Workspace Settings, click Set up Information Privacy.
3. Under Privacy Filters Redaction Rules, specify how to redact the data:
 - To redact sensitive data so that it is not saved by the Scratch Pad, Recent Typing, and other productivity features, select "Enable redaction (exported data only)".
 - To redact data on host screens, select "Redact display data".
 - To redact user-typed data, select "Redact data while typing".
4. Under Privacy Filters, click Add and enter a description for this rule.
5. Select Simple expression and in the box, type # symbols to represent the digits of the telephone data you want to protect. For example:
###-###-####
Be sure to use the formats that your host systems use to display these numbers. If telephone numbers are entered both with and without dashes, you'll need to set up another filter without dashes. For example:
#####
6. Click OK to save your changes.
7. Connect to a host application that displays telephone number data to verify that the data is redacted.

Protect Credit Card Data

To help your organization meet Payment Card Industry Data Security Standard (PCI DSS) requirements, InfoConnect Desktop can automatically protect credit/debit card data that is entered or stored on host screens. Let's say that you want to protect credit card data.

1. On the Ribbon File menu, choose InfoConnect Workspace settings, and click Set Up Information Privacy.
2. Under Primary Account Number (PAN) Redaction Rules, choose Enable Redaction, Redact display data, and Redact data while typing.
3. Under Primary Account Number (PAN) Detection Rules, note that Simple PAN detection is selected. Use this default.
4. Click OK to save your changes.
5. Connect to a host application that contains an input field long enough to enter a credit card number.
6. Remove a credit card from your wallet and type the number into the input field. Notice that when you enter the last digit, all but the last 4 digits of the credit card number are redacted.

Secure File Transfers

Traditional protocols, such as Telnet and FTP, are not inherently secure. They put your confidential host data at risk. InfoConnect Desktop helps you manage that risk as your needs evolve — with comprehensive support for existing security infrastructures, user-level security features, and encryption technology that meets today's stringent security mandates. This level of security combined with support for a broad range of hosts is unmatched by competitive products.

Modernization and Productivity


The productivity of your end users is critical to meeting your business goals. Features such as Auto Complete, Auto Expand, Spell Check, Scratch Pad, Recent Typing, and Screen History can make your cryptic legacy host applications work like modern office apps, saving users thousands of keystrokes throughout the day and shortening call times while improving customer satisfaction.

Just as importantly, these features improve the quality of data users enter into the system, reducing errors and improving data accuracy.


Because InfoConnect Desktop is integrated with current and older versions of Office applications, users can copy data from the host screen into a Word document, e-mail message, or PowerPoint slide with the click of a button.

E-mail a Host Screen

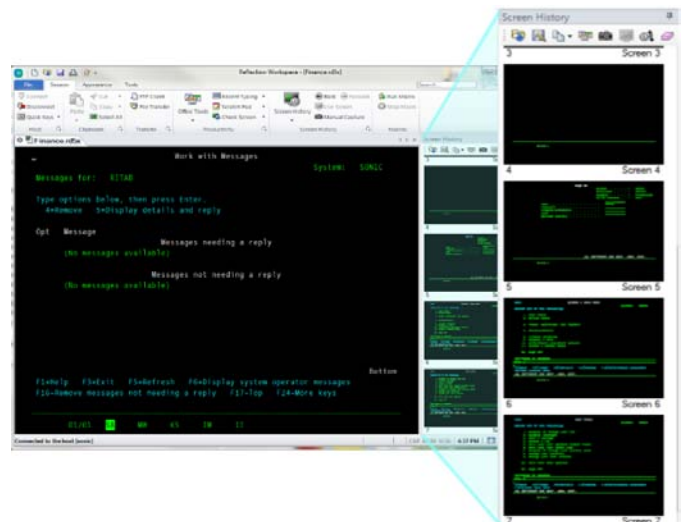
Suppose a sales representative needs complete information on a customer account. Sending the data is as easy as 1-2-3.

1. Navigate to the appropriate screen, and then click the Office Tools button  on the Session Ribbon. The Office Tools pane opens.
2. From the Office Tools pane, under Create New, click E-mail Message.
InfoConnect opens a new e-mail message in Outlook, with the current screen content pasted into it. If an account or telephone number was included in the screen, look closely at the image in the e-mail. Because you set up privacy filters, this sensitive information is obscured in the screen image within the e-mail message.
3. Fill in the To and Subject lines of the e-mail, and then click Send.

Find Host Screens Fast

With the InfoConnect Screen History function, you can review host screens and use them in Office applications without having to navigate back to them. Display the screen history for the session by clicking the Screen History button  on the Session tab of the Ribbon.

Navigate through four or five host screens, and notice the way they appear in the Screen History pane.



The Screen History pane


EVALUATING INFOCONNECT DESKTOP

Now imagine that you have just received a call from a courier who needs to verify directions to a customer location. You've already been to the customer data screen. Rather than navigate back to give the courier the information he needs, you can get to the screen by using Screen History in one of two ways:

1. If you only have a few screens to review, scroll through the Screen History pane and click the customer data screen to display it in the main session window.

-or-

If you have multiple screens to review or the data you need is too small to read:

- a. Enter the customer's name in the Search box above the Ribbon.
- b. On the Search button  , click the down arrow to select Screen History Search.

The Search Results appear below the terminal window, so that you can move quickly to the screen that has the required data.

2. To get directions to the customer's address, copy the address, click the tab for the online map application you connected to earlier, and paste the address into the destination address field.

You can respond to the call that easily!

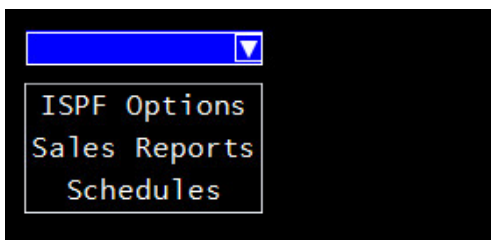
InfoConnect Desktop productivity features accelerate data entry and host navigation, improving user efficiency while reducing data-entry errors.

Modernize your Host Screens

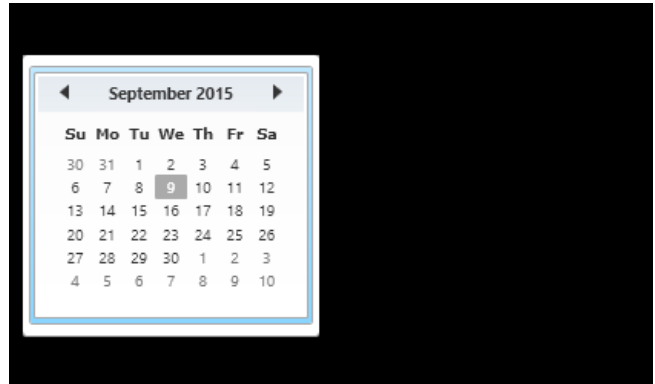
The Micro Focus Plus Screen Designer, available for IBM host sessions, enables you to modernize your legacy host applications with current-day application functionality.

With the Screen Designer, you can quickly add modern UI elements to your legacy IBM host applications, such as drop-down lists, buttons, and date-pickers, to make data entry easier.

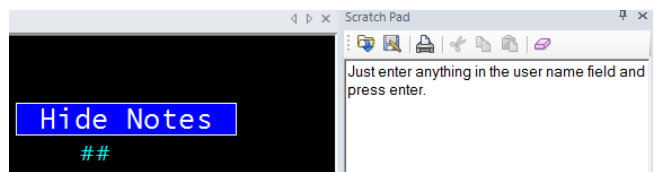
Dropdown lists replace old-style numbered option lists with more modern drop-down selection lists.



Calendars replace manual date entry with a graphical calendar date-picker.



New Buttons can be added to host screens and programmed to start macros or perform other actions.



Visual Basic for Applications

For even more sophisticated customization and integration requirements, leverage the powerful features of Visual Basic for Applications (VBA), which is supported in InfoConnect Desktop. With VBA you can automate routine tasks and integrate host applications with web or Windows desktop applications—all on the familiar VBA platform. While InfoConnect Desktop continues to support running and editing CASL macros, VBA is the new default macro language. Use the macro recorder to automate processes in a single session or across multiple sessions. Or, use the integrated VBA editor to develop even more powerful automation.

Imagine that your users need to copy information from one host application and paste it into an application on a different host. You can save them time and keystrokes by automating this task.

To try this yourself, you can use demonstration host sessions.



Create Demonstration Host Sessions

The Pro versions of InfoConnect Desktop include demonstration hosts for IBM session types. To test copying from one session to another, you can use two demonstration host sessions.

EVALUATING INFOCONNECT DESKTOP

1. From the Quick Access Toolbar, click the New Document icon, select the 5250 terminal template and click Create.
2. For host name, enter “demo:ibm5250.sim” and click OK.
3. Save this session as DemoSource.
4. To log into the demo host, leave the logon fields blank and press Enter. This displays a sample Main Menu screen.
5. Under Selection or command, type “kayak” and press Enter. This displays a sample data screen. Leave this session running.
6. Create a second session using the same simulation host.
7. Save your second session as DemoDestination.
8. Press Enter at the logon screen and leave this destination session showing the Main Menu screen.

Record the Macro

1. Click on the DemoSource tab to display the first session.
2. On the Tools tab of the Ribbon, click  Record Macro to start recording. (If this button isn't visible, expand the window.)
3. Select the word “KAYAK” in the title on this screen, then right-click and select Copy.
4. Click the tab for the DemoDestination session.
5. With the cursor in the command location, right-click, select Paste.
6. Click  Stop Recording.
7. Save the Macro as “Demo”.

By default your macro is saved in the VBA project in the DemoSource session where you initiated the recording. You can run it from that session.

Run the Macro

1. In the DemoDestination session, clear the text that was entered when you recorded the macro.
2. Click the DemoSource tab to return to this session.
3. On the Ribbon, click the Session tab, then click Run Macro.

This displays a dialog box that lists the supported macros for your InfoConnect installation. The values listed depend on the session type and how you install InfoConnect.

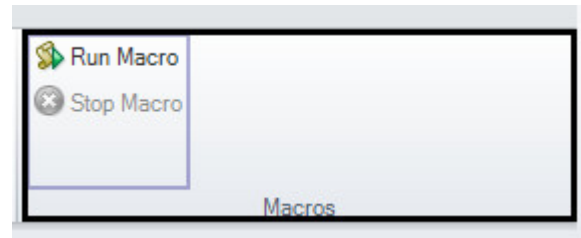
4. Select InfoConnect Workspace Macro.
5. Select the Recorded.Demo macro you just created and click Run.

The macro copies text from the source session into the destination, repeating your recorded actions.

Since you expect your users to perform this task frequently, you'll want to use the built-in UI Designer utility to add a button to the Ribbon for your new macro.

Add a Button to the Ribbon

1. In the workspace, click the tab for the session from which you will run the macro (DemoSource in our example),
2. On the Appearance tab of the Ribbon, click UI Designer.
3. Select the Macros group in the image of the Session Ribbon.



4. Below, from the Insert Controls pane, click Button. A new button is added to the Macro group.



5. From the Settings pane, click Select Action.
6. In the Action list, select Run InfoConnect Workspace Macro.
7. Under Action Parameters, click Select Macro, choose the VBA project and macro to associate with this button, and then click OK.
8. From the Settings pane, select Change Settings for “Run InfoConnect Workspace Macro.”
9. Edit the label, ToolTip, and description.
10. When you're done, click OK.

The new button appears on the Session tab of the Ribbon. You can use this button to run your macro.

Maximize IT Flexibility

IT infrastructures are constantly evolving and growing more complex. To maximize your return on investment, desktop applications should support and leverage other cost-saving IT technologies.

InfoConnect Desktop gives you the flexibility you need to control IT complexity. Using InfoConnect Desktop's administrative tools, you can fully customize it and create deployment packages tailored to meet your business requirements.

InfoConnect Desktop supports a mix of existing IT infrastructure components, including Microsoft Active Directory, Microsoft Group Policy technologies, and a variety of virtualization technologies. For more information on using InfoConnect Desktop with these products, see the Attachmate Support site.

InfoConnect Desktop works within your existing security infrastructure for handling user authorization and authentication, including features like Kerberos and multi-factor authentication with PKI certificates.

InfoConnect Desktop is also integrated with Micro Focus Host Access Management and Security Server (MSS). This powerful add-on boosts your host security by connecting your *existing* identity management and authentication infrastructure to your host systems.

MSS also allows you to centrally manage and deploy InfoConnect terminal emulation configurations to hundreds or thousands of user desktops across the enterprise.

All of the current Micro Focus terminal emulation solutions support IPv6 and 64-bit computing. And Micro Focus is currently focused on providing broad support for enterprise virtualization technologies.

Micro Focus has been developing IT solutions that support emerging technologies for nearly 30 years. As your business continues to evolve, Micro Focus is committed to building solutions that maximize your IT investments and allow your IT organization to be as flexible as possible. Micro Focus bridges the old and the new, enabling you to exploit the latest industry innovation *and* leverage prior investments.

Simplify Migration and Support

Migrating from one desktop application to another is never easy. Migrations can be time consuming and resource intensive.

However, supporting multiple emulation products also puts an ongoing and unnecessary drain on valuable IT resources. The problem is determining how to standardize on a single solution, without losing the custom macros, keyboard maps, and settings files you've created over the years, and without disrupting your users' workflows.

The solution is InfoConnect Desktop. You can successfully standardize on an InfoConnect single-emulation solution using the proven tools and services of Micro Focus.

Compatibility tools built into InfoConnect Desktop run competitive macros, keyboard maps, and settings files; thereby minimizing the risk of business disruption.

InfoConnect Desktop has deeper support for Windows 7, Windows 8, and Windows 10 than any competitive terminal emulation product. It also has broader security options, unique user productivity tools, and wide-ranging support for existing and emerging technologies.

By providing InfoConnect Desktop to your emulation users, you'll allow them to take advantage of the powerful features, robust security, and Windows integration that they can't get anywhere else. Bottom line: InfoConnect Desktop is ready for Windows 7, Windows 8, and Windows 10 when you are.

For More Information on InfoConnect Desktop editions

For more information about InfoConnect Desktop editions, review the product Help. For further assistance regarding evaluation software and product updates, visit our Technical Support site at <http://www.attachmate.com/Support/>.



For office locations, partners, and resellers, visit our Web site at www.attachmate.com.

Provided for informational use only; may be modified at any time without notice. No part of this document may be reproduced, transmitted, transcribed, or translated into any language, in any form, or by any means, without the written permission of Micro Focus.

Copyright © 2015 Attachmate Corporation, a subsidiary of Micro Focus. All Rights Reserved. Micro Focus, the Micro Focus symbol, Extra!, Reflection, and InfoConnect are registered trademarks of Micro Focus in the USA. All other trademarks, trade names, or company names referenced herein are used for identification only and are the property of their respective owners.